

# We build better solutions



HMI Elements is an HMI specialist with 30 years experience and a reputation for innovation, reliability and excellence. As a key supplier to oil and gas industries worldwide, our Zone 1 and Zone 2 ATEX, IECEx and AEx compliant HMIs are field-tested and proven to perform in the harshest conditions.



## PC/Monitor/terminal - ATEX & EAC



**Model**  
800-Z1 15" | 900-Z1 19"  
**Extremely Rugged  
Hazardous Area ATEX  
Zone 1 15" or 19" display**

- Simple to install
- Range of mounting options
- High Bright screen
- IP66 (on all four sides)
- Touch screen \*
- Wide temperature range
- Integrated universal AC or DC power supply
- Custom configuration

\* Not available on 800-Z1 terminals



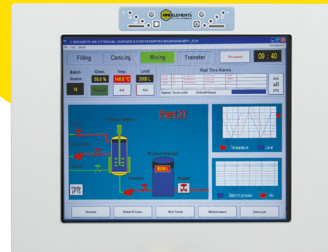
## Monitor

- Accepts DVI, VGA or Composite video



## Full PC/ Workstation

- Intel i7 Processor, COM express with TPM
- Windows 10 & 7 Pro
- Touch screen
- WiFi
- On board health monitor



## KVM/Terminal

- Fiber range 10,000 meters; CAT5 300 meters; DVI/digital KVM 140 meters
- Touch screen (900-Z1 only), Keypad / integrated mouse or full qwerty keyboard (other language available)



## Accessories

### Safe Area op-is Fiber Media Converter



- Fiber IS outputs certified ATEX, IECEx, AEx
- Lightweight at only 4.4lbs with a depth of 9.1"
- Two 'Ex op is' fiber ports - inherently safe to IEC 60079-28:2015
- Functions as un-managed Ethernet switch both fiber and copper ports
- Can be daisy chained for multiple fiber and copper connections
- No configuration is necessary

### Wireless Access Point – ATEX, IECEx, AEx



- Ingress: IP66 all sides
- Suitable for Zone 1 and Zone 2
- Can be used as access point or bridge
- Fully configurable to meet statutory Wi-Fi requirements worldwide
- **Cost effective method of extending Wi-Fi networks into the hazardous area**



Exloc Instruments UK Ltd,  
Unit 7,  
Riverside Court,  
Delph,  
OL3 5FZ

Tel: 01457 239301  
sales@exloc.co.uk