

SPECIALIST HAZARDOUS AREA COMPUTING

> We build better solutions

Smart-Ex is an HMI specialist with more than 25 years experience and a reputation for innovation, reliability and excellence. As a key supplier to oil and gas industries worldwide, our Zone 1 ATEX and Zone 2 ATEX, IECEx and AEx compliant HMIs are field-tested and proven to perform in the harshest conditions.

Zone 2 > PC – ATEX, IECEx, AEx and CSA

Model: 1302-Z2 Ultra Rugged RFD/HMI/PC

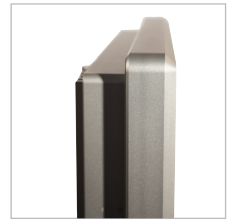


- Certified for use in Class 1 Division 2, Class 1 Zone 2, ATEX & IECEx Zone 2 areas
- Super high bright, sunlight viewable, 19" 1000 Nit multi-touch, glove-friendly touchscreen
- Second Gen Dual Core Atom or Core i7 (TPM Compliant)
- Ethernet, Wi-Fi or Fiber Optic comms
- Choice of universal operating voltages: PSU built in AC or DC
- Fully operational within -40°C to +60°C (-40°F to +140°F)
- Internal temperature and humidity sensors; available for remote telemetry
- Weighs only 12kg (27lb) and only 90mm (3.5") deep
- VESA, yoke or panel mounting
- IP66 (NEMA 4 and NEMA 4X)
- Field maintainable

1000 NIT touchscreen



Only 3.5" (90mm) deep



Mountable on desktop, VESA or Yoke Stand



Zone 1 > PC – ATEX, IECEx, AEx and CSA

Model: 470-Z1 Ultra Rugged PC/DDU/RFD/Driller's Display



- Certified for use in Zone 1, Class 1 Zone 1, ATEX & IECEx & CSA C22.2
- Dual Core Atom 1.86GHz
- 12.1" high bright LCD panel, 1024 x 768 native resolution
- Projected Capacitive Technology (PCT) - Multi Touch, Glove Friendly
- Ethernet, Wi-Fi or Fiber Optic comms
- Bluetooth Version 2.0+EDR
- Fully operational within -40°C to +60°C (-40°F to +140°F)
- Weighs less than 35lbs / 16kg
- 385(W) x 260(H) x 116(D)mm; 15.2 x 10.2 x 4.6 inches
- IP66 (NEMA4 and NEM 4X)
- I/O available out rear or bottom

Compact and Lightweight



Ethernet, Fiber Optics or Wi-Fi communications



Desktop Stand with Sunshield



> Choose your line, choose your flavor

Our ATEX-certified Zone 1 series is as versatile as you need it to be

Model: 800-Z1 15" / 900-Z1 19"



Extremely Rugged Hazardous Area ATEX Zone 1 15" or 19" display

- Simple to install
- Range of mounting options
- High Bright screen
- IP66 (on all four sides)
- Touch screen
- Wide temperature range
- Integrated universal AC or DC power supply
- Custom configuration



Monitor

- Accepts DVI, VGA or composite video
- Touch screen



Full PC/Workstation

- Intel i7 Processor, COM express with TPM
- Windows 7 Pro
- Touch screen
- WiFi
- On board health monitor



SAFE AREA



HAZARDOUS AREA

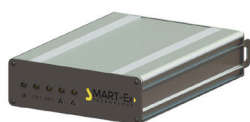
KVM/Terminal

- Fiber range 10,000 meters; CAT5 300 meters; DVI/digital KVM 140 meters
- Touch screen, Keypad / integrated mouse or full qwerty keyboard (other languages available)

Zone 1 > Accessories

Safe Area op-is Fiber Media Converter

- Fiber IS outputs certified ATEX, IECEx, AEx
- Lightweight at only 4.4lbs with a depth of 9.1"
- Two 'Ex op is' fiber ports - inherently safe to IEC 60079-28:2015
- Functions as un-managed Ethernet switch both fiber and copper ports
- Can be daisy chained for multiple fiber and copper connections
- No configuration is necessary



DOC-SFC-Rev 4



Wireless Access Point - ATEX, IECEx, AEx

- Ingress: IP66 all sides
- Suitable for Zone 1 and Zone 2
- Can be used as access point or bridge
- Fully configurable to meet statutory Wi-Fi requirements worldwide
- Cost effective method of extending Wi-Fi networks into the hazardous area

Designs and specifications subject to change without notice. Errors and omissions excepted.

Exloc Instruments UK Ltd

Unit 7 Riverside Court,
Huddersfield Road
Delph, Oldham
OL3 5FZ UK

Phone: +44 (0) 1457 239301

Email: sales@exloc.co.uk

Web: www.exloc.co.uk